



## HALO

**ACTIVE - H1A**



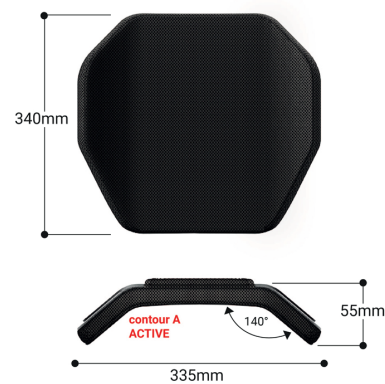
mountable on widths from 340mm to 380mm  
montabile su larghezze da 340 mm a 380 mm

**ACTIVE - H2A**



mountable on widths from 340mm to 380mm  
montabile su larghezze da 340 mm a 380 mm

**ACTIVE - H3A**



mountable on widths from 340mm to 380mm  
montabile su larghezze da 340 mm a 380 mm

**ACTIVE - H4A**



mountable on widths from 400mm to 460mm  
montabile su larghezze da 400 mm a 460 mm

**ACTIVE - H5A**



mountable on widths from 400mm to 460mm  
montabile su larghezze da 400 mm a 460 mm

**ACTIVE - H6A**



mountable on widths from 400mm to 460mm  
montabile su larghezze da 400 mm a 460 mm

Weight  $\pm$  1000gr

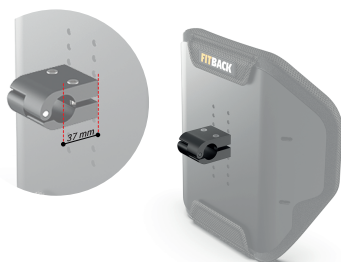
Supplied with 30 mm high-density foam padding and upholstery in fireproof and breathable fabric. The backrest can be mounted to the wheelchair either centrally or laterally. Both clamps guarantee a wide range of adjustments.

Peso  $\pm$  1000gr

Viene fornita un'imbottitura con schiuma ad alta densità di spessore 30mm e il relativo rivestimento in materiale ignifugo e traspirante.

Lo schienale può essere infatti montato alla carrozzina centralmente oppure lateralmente. Entrambi gli attacchi garantiscono ampie possibilità di regolazioni.

**CLACE**



adaptable to Ø 19/22/25mm tubes  
adattabile su tubi Ø 19/22/25mm

**CLALA**



adaptable to Ø 22/25mm tubes  
adattabile su tubi Ø 22/25mm

**CLAR1**



adaptable to Ø 30mm tubes  
adattabile su tubi Ø 30mm

**CLAQR**



adaptable to Ø 22/25mm tubes  
adattabile su tubi Ø 22/25mm

### ARIA WHEELS SRL

Registered Office\_Via della Divisione Torino, 92 00143 Roma - Italy

Production Dept.\_Via A. Volta, 7/B 36030 Costabissara (VI) - Italy

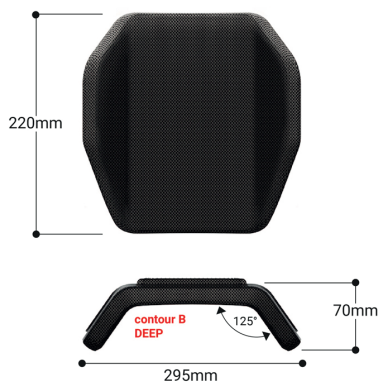
VAT IT 12848301003 | tel.+39 0444701414

www.ariawheels.com | info@ariawheels.com



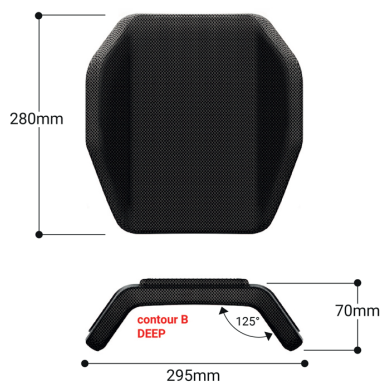
## HALO

**DEEP - H1D**



mountable on widths from 340mm to 380mm  
montabile su larghezze da 340 mm a 380 mm

**DEEP - H2D**



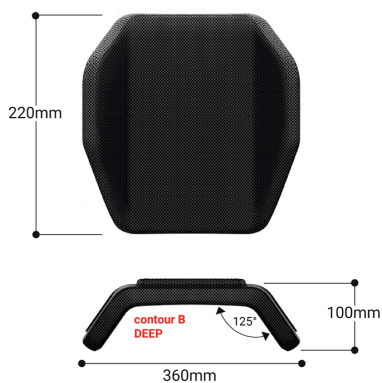
mountable on widths from 340mm to 380mm  
montabile su larghezze da 340 mm a 380 mm

**DEEP - H3D**



mountable on widths from 340mm to 380mm  
montabile su larghezze da 340 mm a 380 mm

**DEEP - H4D**



mountable on widths from 400mm to 460mm  
montabile su larghezze da 400 mm a 460 mm

**DEEP - H5D**



mountable on widths from 400mm to 460mm  
montabile su larghezze da 400 mm a 460 mm

**DEEP - H6D**



mountable on widths from 400mm to 460mm  
montabile su larghezze da 400 mm a 460 mm

Weight  $\pm$  700gr

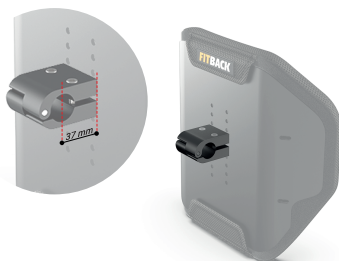
Supplied with 30 mm high-density foam padding and upholstery in fireproof and breathable fabric. The backrest can be mounted to the wheelchair either centrally or laterally. Both clamps guarantee a wide range of adjustments.

Peso  $\pm$  700gr

Viene fornita un'imbottitura con schiuma ad alta densità di spessore 30mm e il relativo rivestimento in materiale ignifugo e traspirante.

Lo schienale può essere infatti montato alla carrozzina centralmente oppure lateralmente. Entrambi gli attacchi garantiscono ampie possibilità di regolazioni.

**CLACE**



adaptable to Ø 19/22/25mm tubes  
adattabile su tubi Ø 19/22/25mm

**CLALA**



adaptable to Ø 22/25mm tubes  
adattabile su tubi Ø 22/25mm

**CLAR1**



adaptable to Ø 30mm tubes  
adattabile su tubi Ø 30mm

**CLAQR**



adaptable to Ø 22/25mm tubes  
adattabile su tubi Ø 22/25mm

**ARIA WHEELS SRL**

Registered Office\_Via della Divisione Torino, 92 00143 Roma - Italy

Production Dept\_Via A. Volta, 7/B 36030 Costabissara (VI) - Italy

VAT IT 12848301003 | tel.+39 0444701414

www.ariawheels.com | info@ariawheels.com